



Rowe
& Co.

103 Stranding Street, Eastleigh

Eastleigh

£325,000

**Rowe
& Co.**



103 Stranding Street

Eastleigh, Eastleigh

Offered with no forward chain, this three-bedroom mid-terrace home is situated in a highly sought-after central Eastleigh location. The accommodation comprises an entrance hall, cloakroom, modern kitchen, and a spacious lounge/dining room. Upstairs, there are three bedrooms, including a master with en-suite facilities, and a family bathroom. Outside, the property benefits from off-road parking and a secluded rear garden — perfect for relaxing or entertaining. LOCATION Set between Southampton and Winchester, Eastleigh sits on the River Itchen and blends its proud railway heritage with modern living. Two mainline stations offer quick links to Winchester and London Waterloo, while the M3, M27, and nearby Southampton Airport make travel effortless. The town boasts a variety of homes — from thatched cottages and Victorian terraces to stylish modern developments — plus great amenities, shops, and supermarkets. Green spaces like Lakeside Country Park and Places Leisure Centre add to Eastleigh's appeal, making it a true commuter's dream.

Council Tax band: C

Tenure: Freehold

EPC Energy Efficiency Rating: C

EPC Environmental Impact Rating: C

- Three Bedrooms
- No Forward Chain
- Enclosed Rear Garden
- Off Road Parking
- En-Suite To Master

103 Stranding Street

Eastleigh, Eastleigh

Offered with no forward chain, this three-bedroom mid-terrace home is situated in a highly sought-after central Eastleigh location. The accommodation comprises an entrance hall, cloakroom, modern kitchen, and a spacious lounge/dining room. Upstairs, there are three bedrooms, including a master with en-suite facilities, and a family bathroom. Outside, the property benefits from off-road parking and a secluded rear garden — perfect for relaxing or entertaining. LOCATION Set between Southampton and Winchester, Eastleigh sits on the River Itchen and blends its proud railway heritage with modern living. Two mainline stations offer quick links to Winchester and London Waterloo, while the M3, M27, and nearby Southampton Airport make travel effortless. The town boasts a variety of homes — from thatched cottages and Victorian terraces to stylish modern developments — plus great amenities, shops, and supermarkets. Green spaces like Lakeside Country Park and Places Leisure Centre add to Eastleigh's appeal, making it a true commuter's dream.

Council Tax band: C

Tenure: Freehold

EPC Energy Efficiency Rating: C

EPC Environmental Impact Rating: C

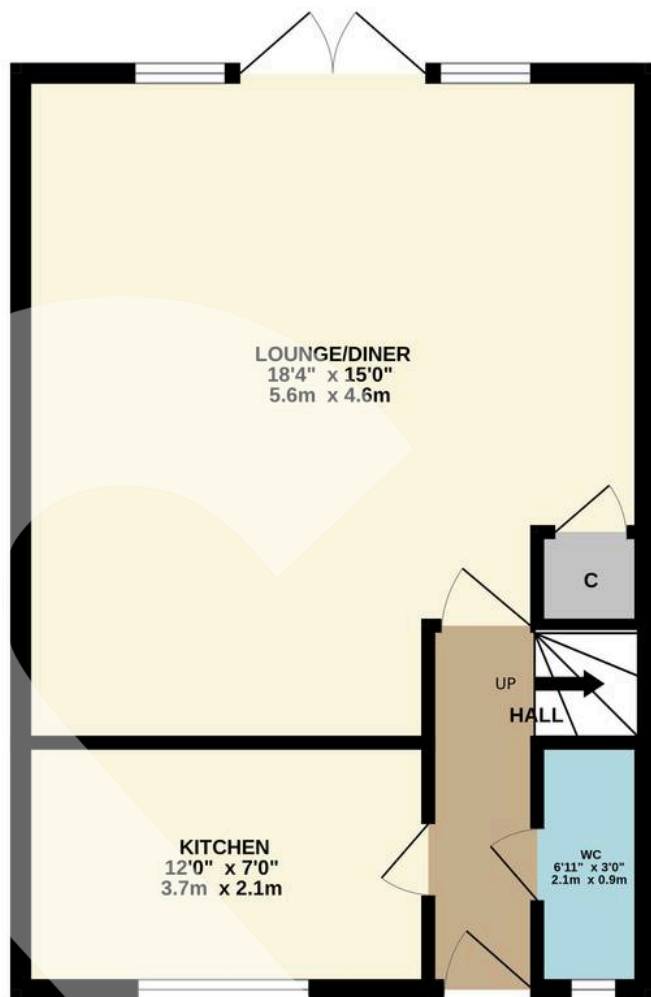
- Three Bedrooms
- No Forward Chain
- Enclosed Rear Garden
- Off Road Parking
- En-Suite To Master



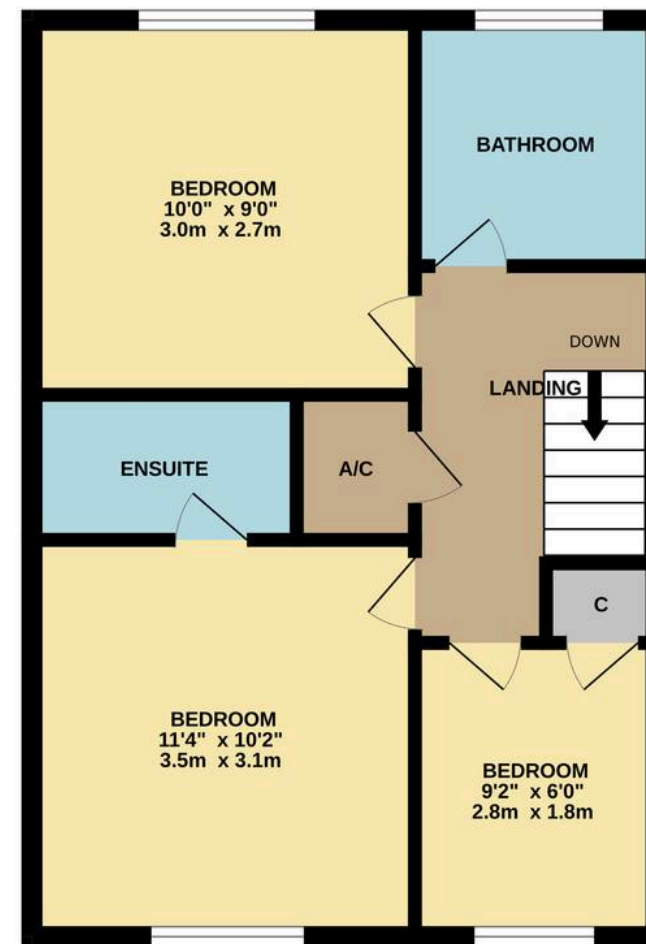
Rowe
& Co.




GROUND FLOOR



1ST FLOOR



 1 Rufus Court, 103 Winchester Road
Chandlers Ford,
SO53 2GG

 02381 102221
 chandlersford@rowehomes.co.uk

Whilst every attempt has been made to ensure the accuracy of the floorplan contained here, measurements of doors, windows, rooms and any other items are approximate and no responsibility is taken for any error, omission or mis-statement. This plan is for illustrative purposes only and should be used as such by any prospective purchaser. The services, systems and appliances shown have not been tested and no guarantee as to their operability or efficiency can be given.
Made with Metropix ©2025

**REQUEST
VIEWING**

(GOTTA BE QUICK!)

